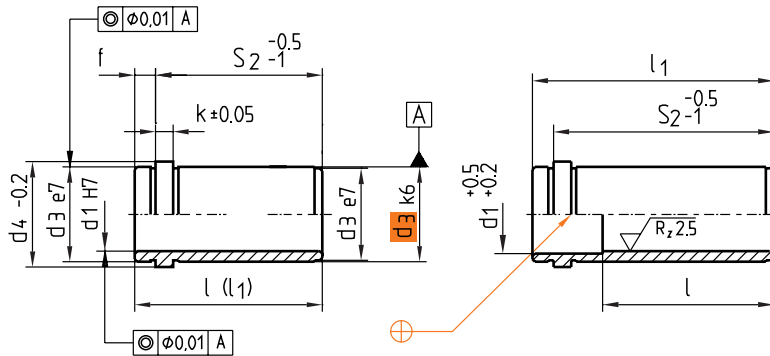


Z10/...

Mat.: ≈ 1.0401/690 + 70 HV 30  
 ≈ DIN 16716-C

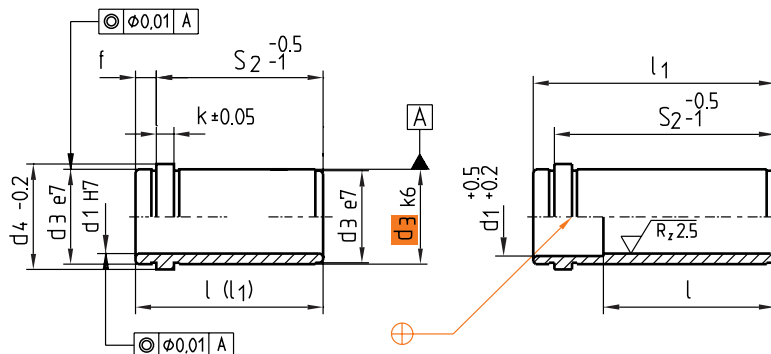


l	l <sub>1</sub>	f	k	d <sub>3</sub>	d <sub>4</sub>	S <sub>2</sub>	d <sub>1</sub>	Nr./No.	d <sub>1</sub>	Nr./No.
15		3	3	14	16	12	9	Z10/ 12/ 9	10	Z10/ 12/10
20						17		17		17
25						22		22		22
30						27		27		27
39						36		36		36
46	49					46		46		46
	59					56		56		56
	69					66		66		66
26		9	6	20	25	17	14	Z10/ 17/14	15	Z10/ 17/15
31						22		22		22
36						27		27		27
45						36		36		36
55						46		46		46
56	65					56		56		56
	75					66		66		66
	85					76		76		76
	95					86		86		86
	105					96		96		96
	125					116		116		116
26		9	6	26	31	17	18	Z10/ 17/18	20	Z10/ 17/20
31						22		22		22
36						27		27		27
45						36		36		36
55						46		46		46
65						56		56		56
75						66		66		66
76	85					76		76		76
	95					86		86		86
	105					96		96		96
	125					116		116		116
	145					136		136		136
26		9	6	30	35	17	22	Z10/ 17/22	24	Z10/ 17/24
31						22		22		22
36						27		27		27
45						36		36		36
55						46		46		46
65						56		56		56

This is trial version  
[www.adultpdf.com](http://www.adultpdf.com)

Z10/...

Mat.: ≈ 1.0401/690 + 70 HV 30  
 ≈ DIN 16716-C



l	l <sub>1</sub>	f	k	d <sub>3</sub>	d <sub>4</sub>	S <sub>2</sub>	d <sub>1</sub>	Nr./No.	d <sub>1</sub>	Nr./No.
75		9	6	30	35	66	22	Z10/ 66/22	24	Z10/ 66/24
85								76		76
95								86		86
105								96		96
96								116		116
125	136	136								
145	156	156								
165										
36		9	6	42	47	27	30	Z10/ 27/30	32	Z10/ 27/32
45								36		36
55								46		46
65								56		56
75								66		66
85								76		76
95								86		86
105								96		96
125								116		116
116								136		136
145								156		156
165	196	196								
205										
58		12	10	54	60	46	40	Z10/ 46/40	42	Z10/ 46/42
68								56		56
78								66		66
88								76		76
98								86		86
108								96		96
128								116		116
136								136		136
148								156		156
168								196		196
208	246	246								
258										

This is trial version  
[www.adultpdf.com](http://www.adultpdf.com)